

# Onto Somethin'

**Team Members:** Suzanne Pierce, Alii Napoleon, Karen Chen

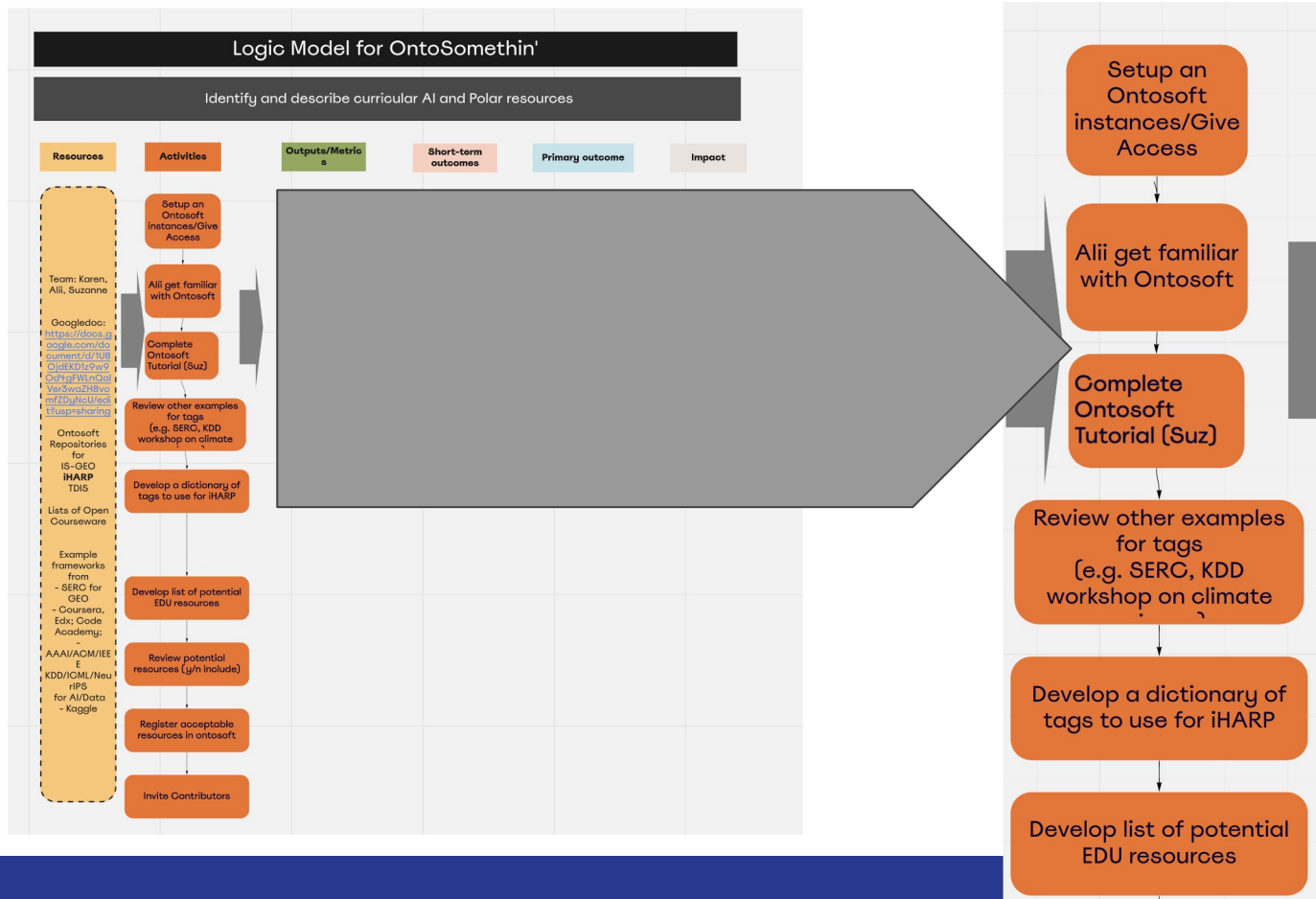
**Goals:**

Identify and describe at least 25 relevant curricular resources to inform the iHARP community.

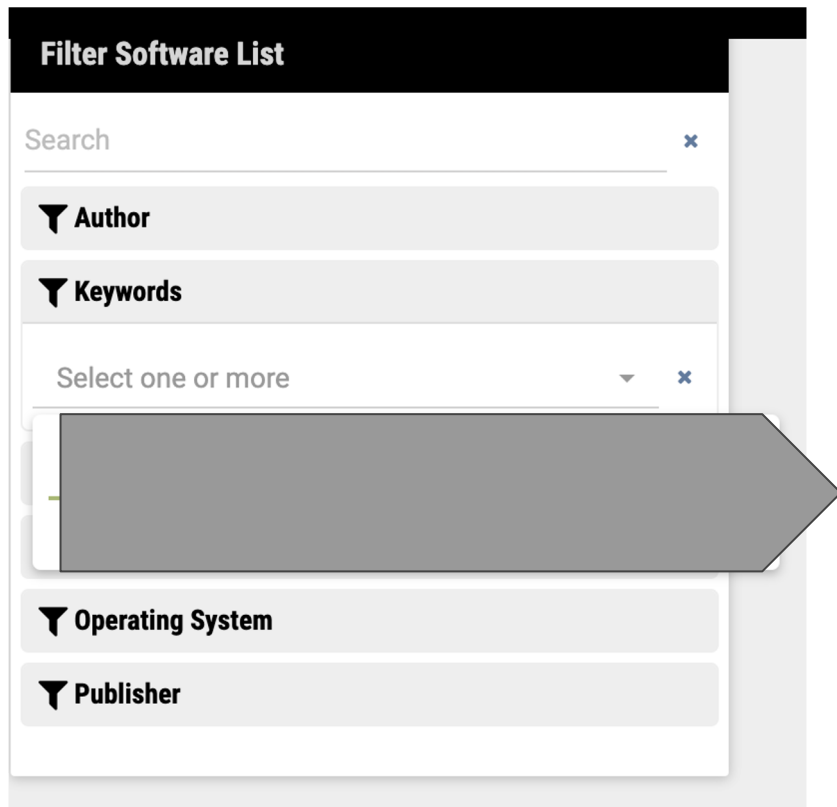
Resources should include domain topics in Data Sciences and Polar Sciences

A Resource list will be produced that describes pedagogical or curricular materials

# Logic Model and Priority Activities



# Setting up a Framework



**Filter Software List**

Search ×

**Author**

**Keywords**

Select one or more ▼ ×

**Operating System**

**Publisher**

A large grey arrow points from the 'Keywords' section towards the right side of the slide.

**Goal is to Prioritize Spatio-temporal Materials for Education from the perspective of both AI and Polar Domains**

## Categories

- Tools
- Teaching materials
- Tutorials

## Keywords or Labels:

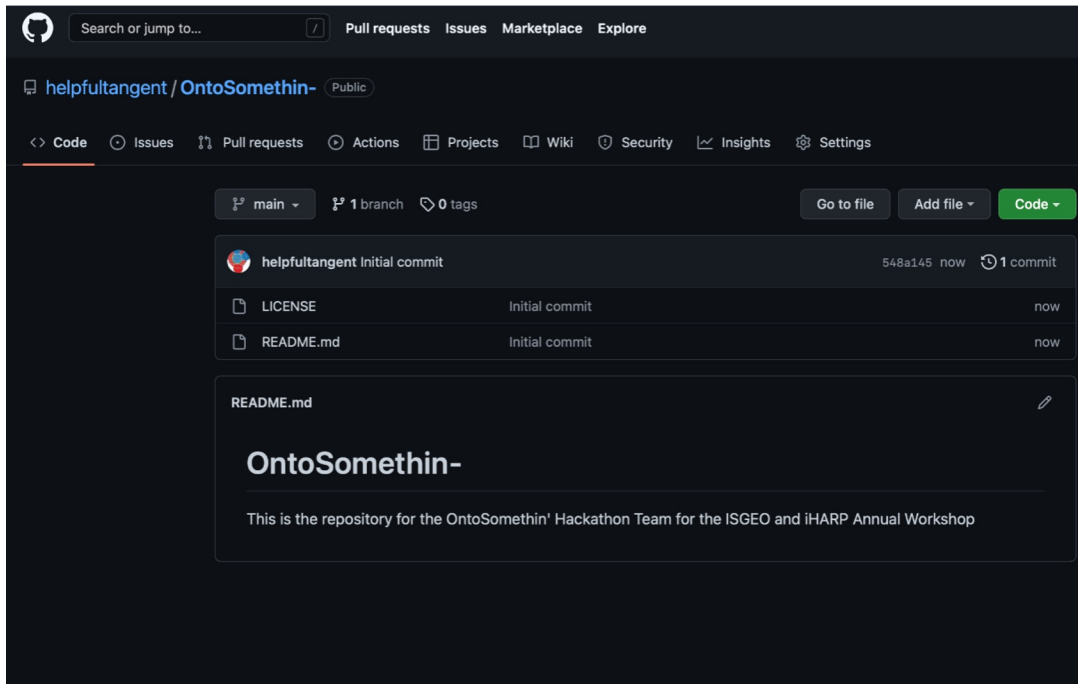
- Domain Problem [ice sheet melting; spatio-temporal; sea ice; etc.]
- Data [benchmark; observational]
- Model [Empirical; Physics-based]
- Approach/Method [examples, Quantitative, Qualitative ]
- CI Resources
- Expertise [Novice; Intermediate; Advanced; Expert]
- Quality [Peer reviewed, non-reviewed]

# Collected Initial Resources to Test Framework

iHARP		
Software Community Training		
Software List		COMPARE
<b>Data Modeling Methods - Informal Posts</b>		
Posted by: admin at 2022-08-18 09:10	DELETE	EDIT
<b>Data Structure - Course Various</b>		
Posted by: admin at 2022-08-18 09:20	DELETE	EDIT
<b>Data Structure - Courses Various</b>		
Posted by: admin at 2022-08-18 09:25	DELETE	EDIT
<b>Deep Multi-Task and Meta Learning</b>		
Posted by: admin at 2022-08-18 09:14	DELETE	EDIT
<b>Full Stack Deep Learning - Course and Tools</b>		
Posted by: admin at 2022-08-18 09:28	DELETE	EDIT
<b>GAN Tutorial</b>		
Posted by: admin at 2022-08-18 09:27	DELETE	EDIT
<b>GPT-3 Book</b>		
Posted by: admin at 2022-08-18 09:06	DELETE	EDIT
<b>Introduction to Machine Learning Problem Framing</b>		
Posted by: admin at 2022-08-18 09:08	DELETE	EDIT
<b>Learn Linux - Various Resources</b>		
Posted by: admin at 2022-08-18 09:19	DELETE	EDIT
<b>Mathematics for Machine Learning</b>		
Posted by: admin at 2022-08-18 09:13	DELETE	EDIT
<b>Public Datasets to practice Machine Learning</b>		
Posted by: admin at 2022-08-18 09:22	DELETE	EDIT
<b>Publishing Papers with Code</b>		
Posted by: admin at 2022-08-18 09:17	DELETE	EDIT
<b>SciPy Conference Talks Collection</b>		
Posted by: admin at 2022-08-18 09:21	DELETE	EDIT
<b>System Design - Various Courses</b>		
Posted by: admin at 2022-08-18 09:23	DELETE	EDIT
<b>What is sea ice?</b>		
Educational content materials providing an introduction to concepts and terminology about sea ice. These materials provide inquiry based learning using the highest educational practices targeting the undergraduate educator, but can be utilized by graduate, as well as K-12 level educators to provi...	DELETE	EDIT
Posted by: spierce at 2022-08-17 14:03		

- 1) Identified possible collections of educational materials
- 2) Began collecting potential resources and adding them to the iHARP instance of OntoSoft

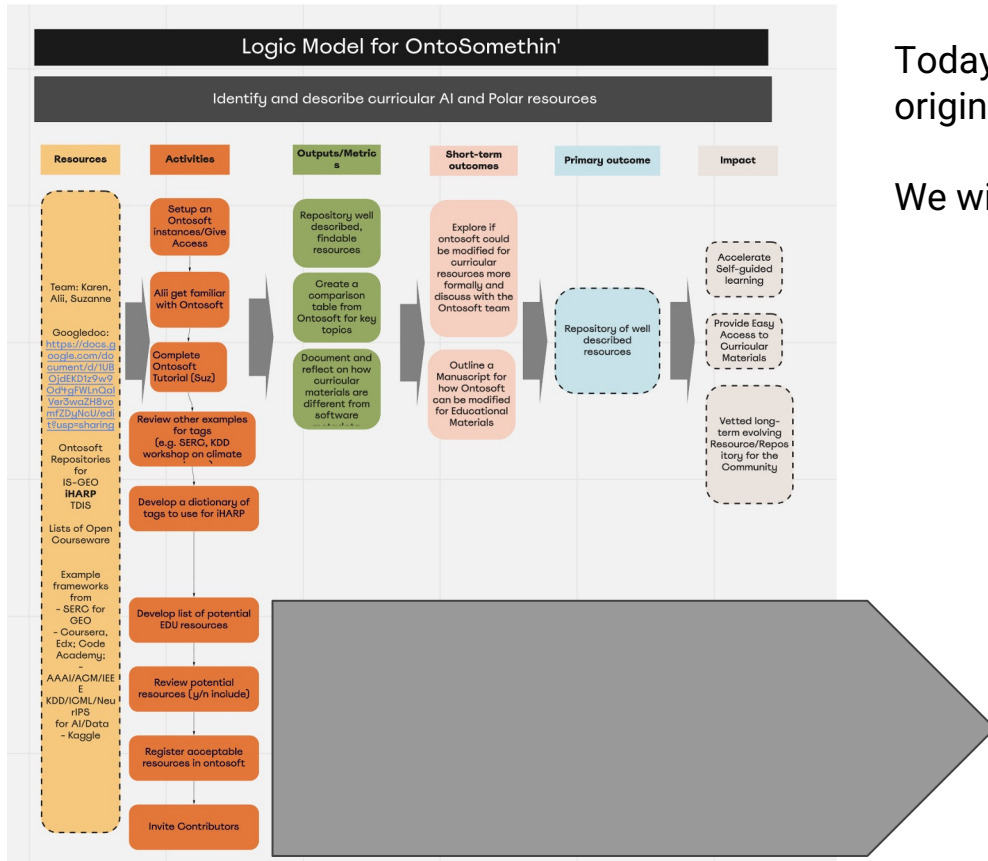
# OntoSomethin' Github Repository Created



We created a space to share our work on Github.

We will begin adding content today.

# Next Steps



Today we will begin the next set of Activities in our original Miro Logic Model

We will also review, revise, and expand next steps

